

Safety Instructions

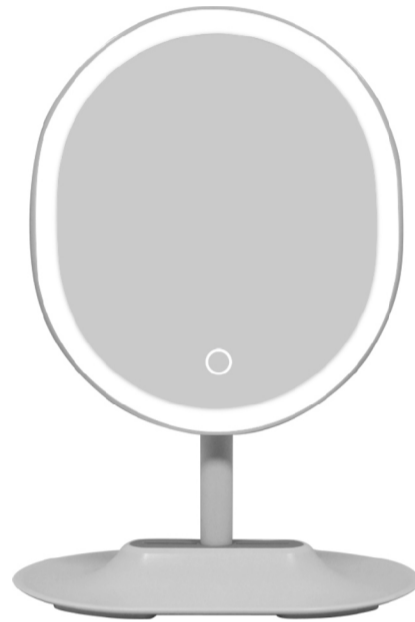
Made in China

- ① Always keep away from water.
- ① Do not place or store appliance where it can fall or be pulled into a tub or sink. If the appliance falls into water, DO NOT REACH INTO THE WATER.
- ① Do not use while bathing or in the shower.
- ① Close supervision is necessary when any appliance is used by or near children or people with a physical/mental disability.
- ① Do not operate this appliance if the appliance malfunctions or has been damaged in any manner. No repairs should be attempted by the consumer.
- ① Use appliance only for intended use as described in this instruction-book.
- ① Be sure mirror is not in a position where it can reflect sunlight.

Instructions for using the USB rechargeable LED lighted makeup mirror






- ① The face shape mirror is designed for use when do makeup
- ② The mirror with LED lighting, it help to light up your face when do makeup.
- ③ The front mirror is high definition 1X regular mirror.
- ④ There's one small 5X magnification mirror magnet to the back side of the big mirror.
- ⑤ You can take off the 5X mirror when use to see more details.
- ⑥ You can also magnet the 5X mirror to the front side of the big mirror to free your hands when use
- ⑦ The mirror is powered by 1000mAh Li-polymer battery. It can be recharged when run out of power.
- ⑧ Please charge this mirror with proper USB cable and charger.
- ⑨ Make sure all functions are turned off when product is not used for some time.

USB RECHARGEABLE LED LIGHTED MAKEUP MIRROR

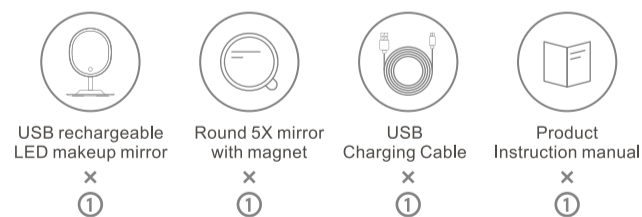


For your safety and continued enjoyment of this product, Please read the instructions carefully before using.

Special Feature

-  Smart 1: 1 face mirror
-  This lighted makeup mirror uses Lifetime Energy Saving LED bulbs. Replacement bulbs are not required
-  A detachable 5x magnifying mirror to see the finer details
-  The base with a storage function, save space at the same time let your dresser clean and tidy
-  Mirror rotation, axial design greater than 90 degrees

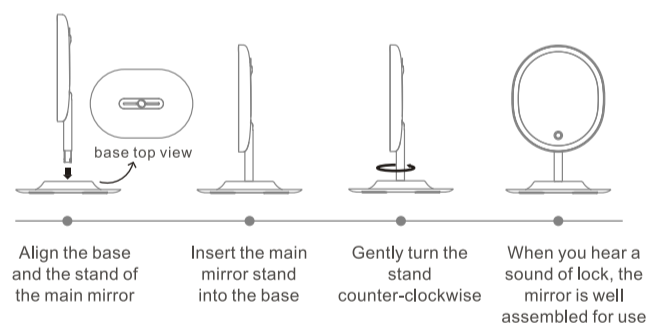
What's in the box



How to charge the mirror

- ① Connect the micro USB port with a 5V power supply or computer by the provided USB cable.
- ② When we start charging, the indicator will light up. When the mirror is charged full, the indicator will turn off automatically.
- ③ Before charging the mirror, please make sure that the light is off.

How to Assemble



Operating Instructions

